

Vector

PC-Duo Remote Control V11 highlights



Only a few years ago, 90% of user support calls would come from desktops at fixed locations on a local or wide-area network. Changes in working methods and changes in lifestyle have created a far wider spectrum of connectivity requirements for supporting today's mobile workforce.

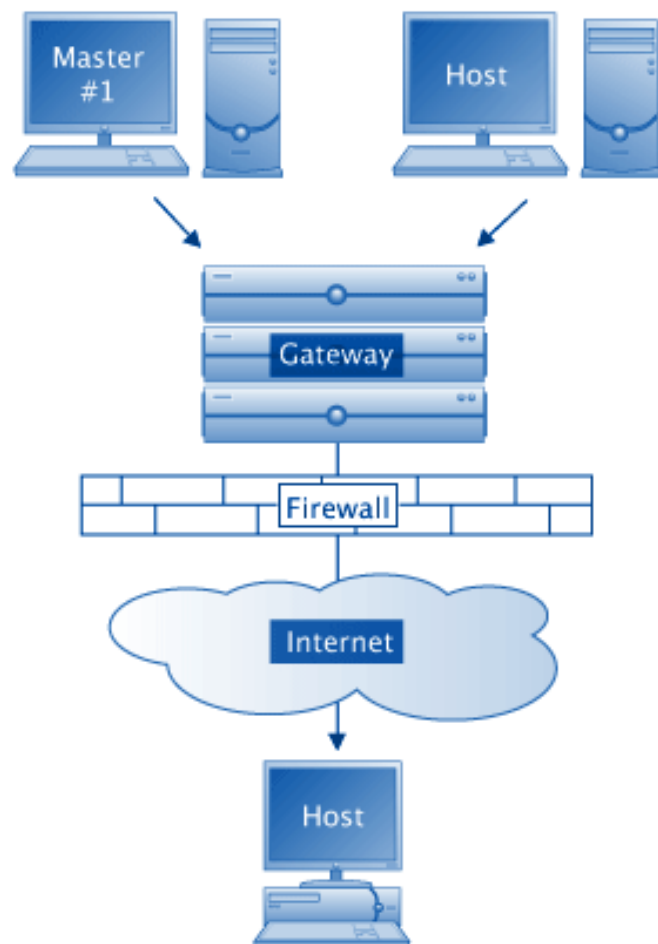
Version 11 of Vector's market leading remote control solution delivers a set of features designed for today's needs for remote support of user PCs, irrespective of location, and particularly for mobile workers whether in a WiFi hotspot, a hotel room, or maybe just at home, behind their personal firewall.

Firewall Friendliness

Supporting users within a LAN/WAN environment did not usually involve firewall issues, except perhaps where inter-departmental firewalls had been installed as part of internal security measures. Today however, negotiating a firewall is a commonplace issue in setting up a remote control session to a remote user. PC-Duo responds to this need with implementation of new Web protocols for inbound connection via a firewall, and for resolution of NAT addresses. The Host can now switch its role to function as a client and establish an outbound connection through a firewall to the Gateway; the Gateway in turn manages any requests for connection from PC-Duo Masters.

SSL Authentication

SSL authentication becomes a cornerstone of the implementation of firewall friendliness. In combination with Proxy Host now being added automatically to the Windows Firewall exception list, this means that in the great majority of instances there will be no need for any firewall port changes when installing the Proxy Host to work on a remote worker's laptop.



Simplicity Maintained

A key requirement for the v11 development team was to retain the simplicity of installation, configuration and use that users of v10 enjoy. With the SSL authentication, installing PC-Duo v11 to work through firewalls and NAT devices is transparent to the user.

Security: Enhanced Encryption

There is often concern over the security of WiFi networks in particular, and PC-Duo v11 introduces 256 bit AES block cipher encryption and SHA-1 hashing as default settings for Master-Host connections. For users of the PC-Duo Enterprise configuration, the Gateway supports other encryption settings including 192 bit and 128 bit AES, and also Triple-DES.

Next Generation Network Addressing

PC-Duo v11 is future-proofed with support for IP v6 addressing.

New PC-Duo Deployment Tool

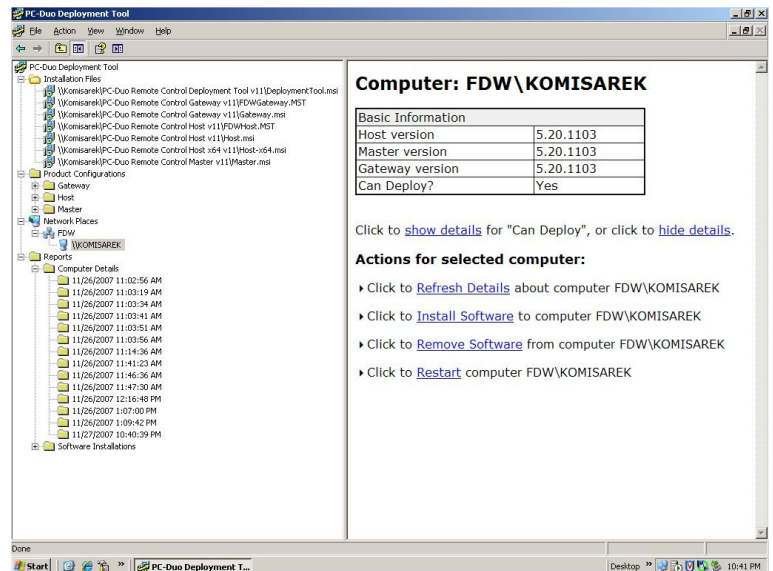
The PC-Duo Deployment Tool provides a family of functions for streamlining the initial deployment and ongoing maintenance of your PC-Duo infrastructure. The four main areas of activity supported are -

- Create default and custom configuration templates for PC-Duo Host, and create .msi installation files.
- Configure templates for selected basic features of PC-Duo Gateway and PC-Duo Master.
- Install - or uninstall - PC-Duo Host, PC-Duo Gateway, or PC-Duo Master on computers in your network. You can install the product from a Windows Installer installation (.msi) file, or using a transform (.mst) file.
- Remotely reboot computers on your network.

The Deployment Tool, which is itself an MMC snap-in, is organized around four tree view components -

- Installation Files** - where .MSI and .MST files are held
- Configurations** - for customizing Host, Gateway and Master configurations and creating .mst files
- Network Places** - groups of network computers, targets for installation, update or removal
- Reports** - summary recording of your product deployment history.

A wide range of Host configuration options can be defined with the Deployment Tool, covering Access Restrictions, Connection Permission protocols, Gateways settings - which Gateways the Host reports to and whether all sessions must be routed through a Gateway, Keyboard and Mouse sharing and lock-out options, Screen Blanking options, Disconnect and Session Termination options, Security settings and Network Protocols.



In the Americas and Asia/Pacific

Vector Networks Inc
Atlanta, Georgia, USA
www.vector-networks.com
sales@vector-networks.com
Sales: 770 622 2850
Support: 800 330 5035

In Europe, the Middle East and Africa

Vector Networks Europe Ltd
Sheffield, South Yorkshire, UK
www.vector-networks.eu
sales@vector-networks.eu
support@vector-networks.eu
Sales: +44 (0)203 286 7500

Your local Supplier is