



## Vector Asset Locator: v5.0

Bridging Security and Asset Management



**IT professionals are searching for technology to reduce the risk of asset and data loss or theft. They are under pressure to act quickly. Vector's Asset Locator is a project-based response to this demand. We supply the optimum asset discovery, location and protection technologies to match the customer's situation. Drawing on a menu of services, Vector will work with organizations from needs assessment through to post installation review.**

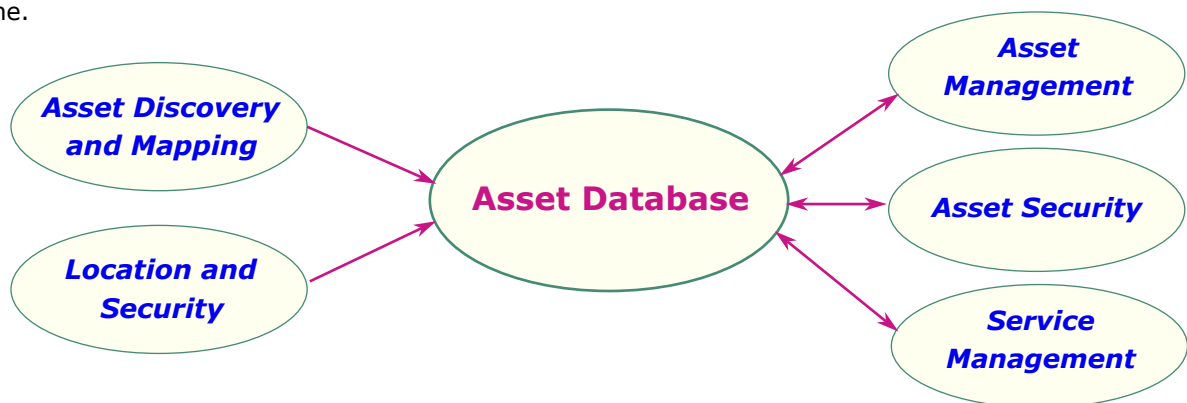
### Track Record

Since entering this field in 2006, Vector has worked with organizations of all sizes, the largest currently involving approximately 9,500 tagged assets, and employing dual-active RFID to provide detailed on-demand location information.

Organizations vary greatly in their needs; some only need to track asset movement through a limited number of entry/exit points, whereas others also need to know at all times the zone or room in which security-critical assets are located. Others want to be able to pinpoint an asset to support 6- or 12-monthly asset audit. Some have multiple campuses, and others only one.

### Integration

When an organization is interested in knowing where assets are, rather than simply stopping them from leaving a building, there can be significant benefits in sharing that information with asset and service management functions. Experience shows that taking these areas of an organization's IT management into account can be important factors in determining which loss prevention and location technology is chosen. Vector believes that in providing a response to the security threat, every opportunity should be taken to exploit the new technology in as many ways as possible.



### The Services Approach

Vector has evolved a menu of services covering all stages of projects from inception through to regular health-check and review. By selecting particular services, organizations can control and customize their level of involvement at each stage of an Asset Locator approach.

The services menu is being refined continually, so make sure to contact Vector's Asset Security Division for the very latest information. Popular options include -

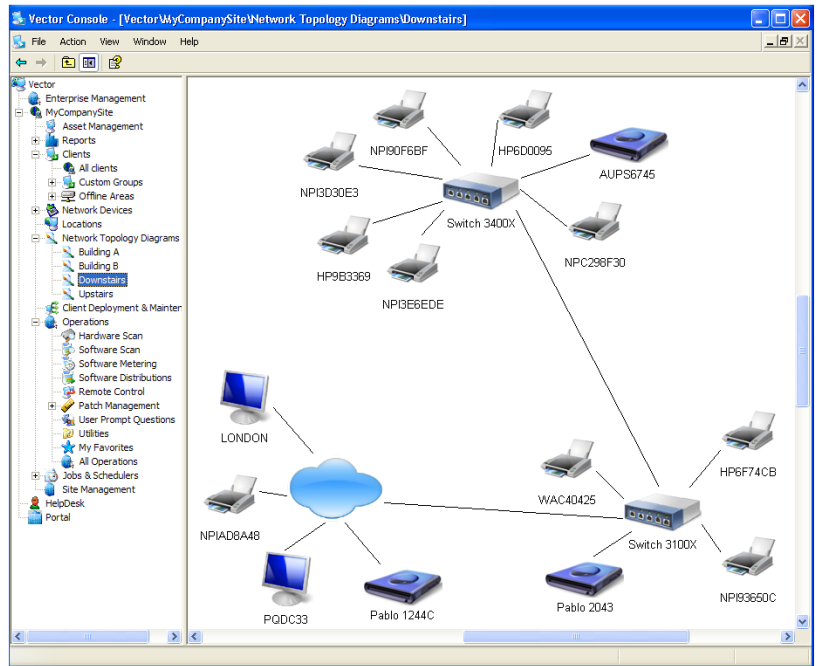
- Management Overview: Assessment of objectives, identification of target assets, definition of realistic expectations.
- Preliminary Study before project commitment, including budgetary costing.
- Selection of optimum technology (e.g. RFID) from Vector's portfolio of approved partners.
- Location survey – usually in collaboration with customer's buildings management.
- Asset tagging.
- Commissioning and training.
- Review sessions: typically 6 month and annual.
- Start to End project management involvement – usually in association with customer project management personnel.

## The Asset Locator Database

Asset Locator projects are normally centered on a database holding the asset information. The database is populated by asset discovery, location, mapping, and configuration inventory functions. Current Status and Change History are exposed through drill-down Web-based reporting.

### Location

One of the most popular approaches to defining and monitoring an IT asset location is to know where it is on the network, and the Asset Mapping function will correlate each PC to the port of the network router, switch or hub to which it is attached (for SNMP-enabled devices). Locations can also be defined manually, and the location characteristic can be used as a search term to identify all assets registered or currently present in that location. Asset Locator also integrates with and imports from other sources of location information, such as RFID, to generate the richest and most accurate definition of the asset's status at any moment.



Typical Segment of a Location Map

### Configuration Information

Having identified all the network attached PCs, the Discovery module also carries out a detailed interrogation of the PC configuration and of its installed software. This allows organizations to include asset valuation information in the asset's security profile. Asset Locator's software inventory methods also enable organizations to define their own classes of security-critical files - typically spreadsheets and database files, and these can also be highlighted within the PC's profile.

## Location and Security Technologies

There are several emerging location technologies, such as WiFi triangulation and GPS. Vector reviews these on a project-by-project basis, but pre-eminent today is RFID. There are many variations within the RFID industry, offering different combinations of functionality, sensitivity, radio frequency, range and power consumption.

We constantly monitor these, and new entries such as using wireless 802.11 frequency, for the right characteristics for IT asset location and security management.

## Non-PC / Non-IT Asset Security

The SQL-compatible asset database provides for the recording of other asset types. Over thirty additional IT asset types are included in the supplied list (such as printers, network devices, special monitors, PDAs) but customers are free to define any number of asset types they can name. Location information is then integrated in exactly the same way as for IT assets.

### Further Information -

More information about the foundation Asset Discovery solution and fully functional evaluation software are available at [www.vector-networks.com](http://www.vector-networks.com). If you would like to discuss the potential for Asset Locator, please email [itassetsecurity@vector-networks.com](mailto:itassetsecurity@vector-networks.com).

### In the Americas and Asia/Pacific

Vector Networks Inc  
Atlanta, Georgia, USA  
[www.vector-networks.com](http://www.vector-networks.com)  
[sales@vector-networks.com](mailto:sales@vector-networks.com)  
Sales: 770 622 2850  
Support: 800 330 5035

### In Europe, the Middle East and Africa

Virtual Network Partners Ltd  
Sheffield, South Yorkshire, UK  
[www.virtualnetworkpartners.eu](http://www.virtualnetworkpartners.eu)  
[sales@virtualnetworkpartners.eu](mailto:sales@virtualnetworkpartners.eu)  
Sales: +44 (0)203 004 0753  
Support: +44 (0)203 004 0751

### Your local Supplier is