



PC-DUO RAS ULTRA QUICK START GUIDE: GETTING STARTED

- Windows Server 2016 or 2019 (VM is perfect) with 2 CPU, 4 GB memory, 50gb HDD space
- Generate a DNS alias for the server and install a matching certificate (i.e. support.acme.com or a wildcard like *.yourwebsite.com)
- Port forward 443 to the server to use PC-Duo RAS externally

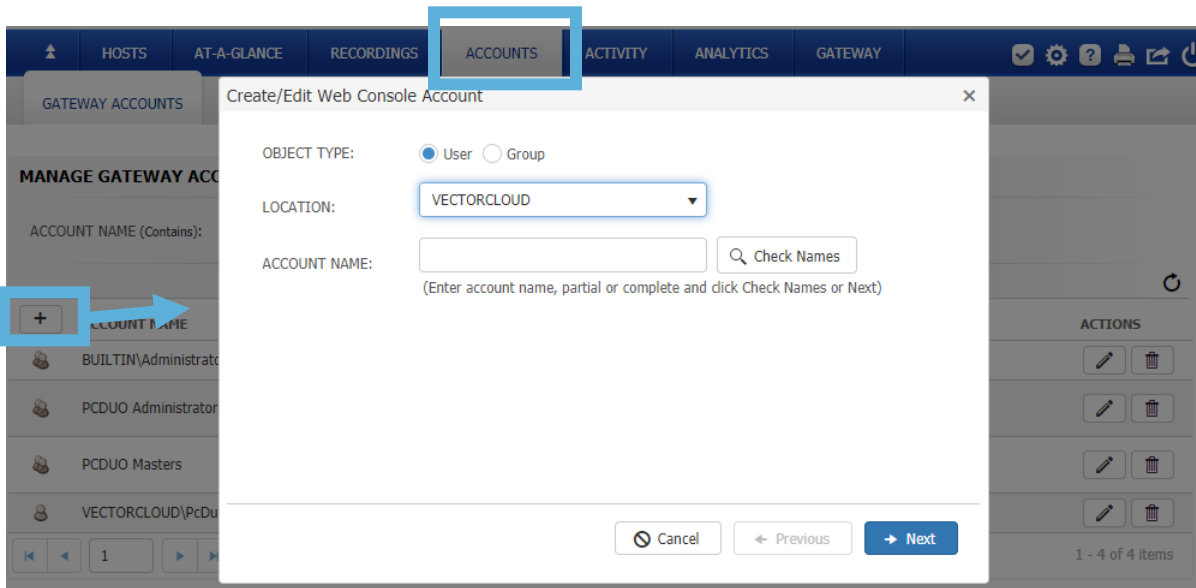
DOWNLOADING AND INSTALLING PC-DUO RAS

- 1) Download the PC-Duo Remote Access Server (RAS) Edition software zip file from within the v13 folder at <ftp.PC-Duonetworks.com> and extract
- 2) Install **PC-DUOProServerProducts.exe** to begin
- 3) The installer will download and install SQL Express by default; hit **Next** or specify an existing SQL Server instance then click **Next**.
 - a. Enter the web address that you want your PC-Duo Web Console to be accessible at and click **Next**.
 - b. Equip the server with a certificate by choosing from a list of installed certificates and click **Next**.
 - c. The installer will ask you to create two service accounts (DOMAIN\RemoteControlGateway and DOMAIN\RemoteControlConsole). The installer will create accounts; supply a password for each and hit **Next -> Finish**.

FIRST TIME LOGIN & ADDING TECHNICIANS

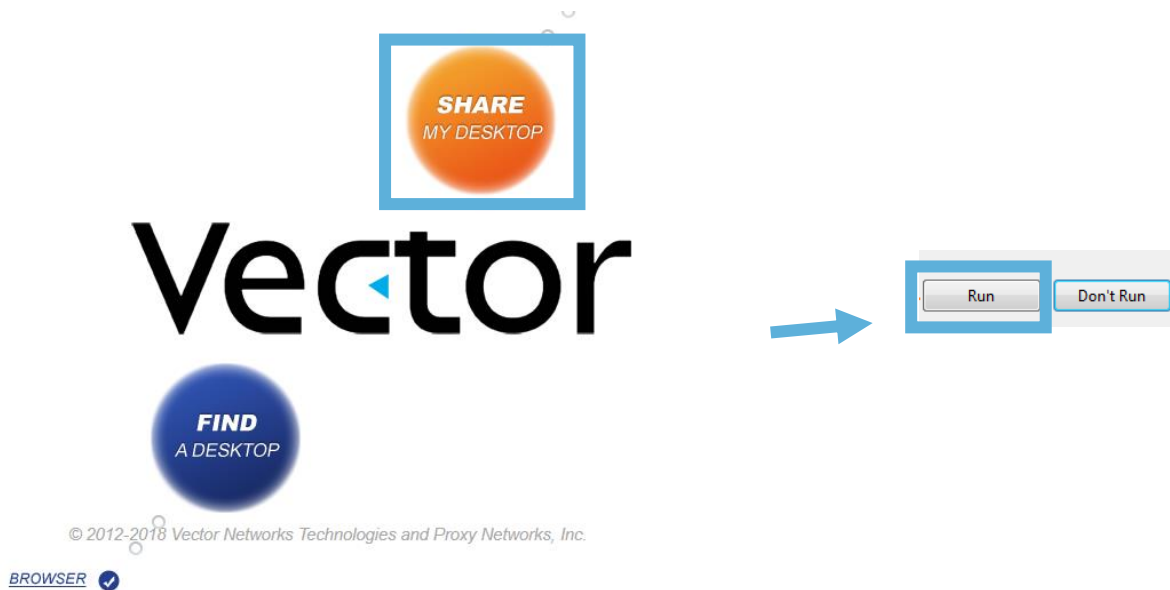
- 1) Visit your web console address using the one specified in step **3a**, log in using the local administrator account
- 2) Use the "**Accounts**" tab to import users or groups from your domain who will be using PC-Duo

Illustration on the next page

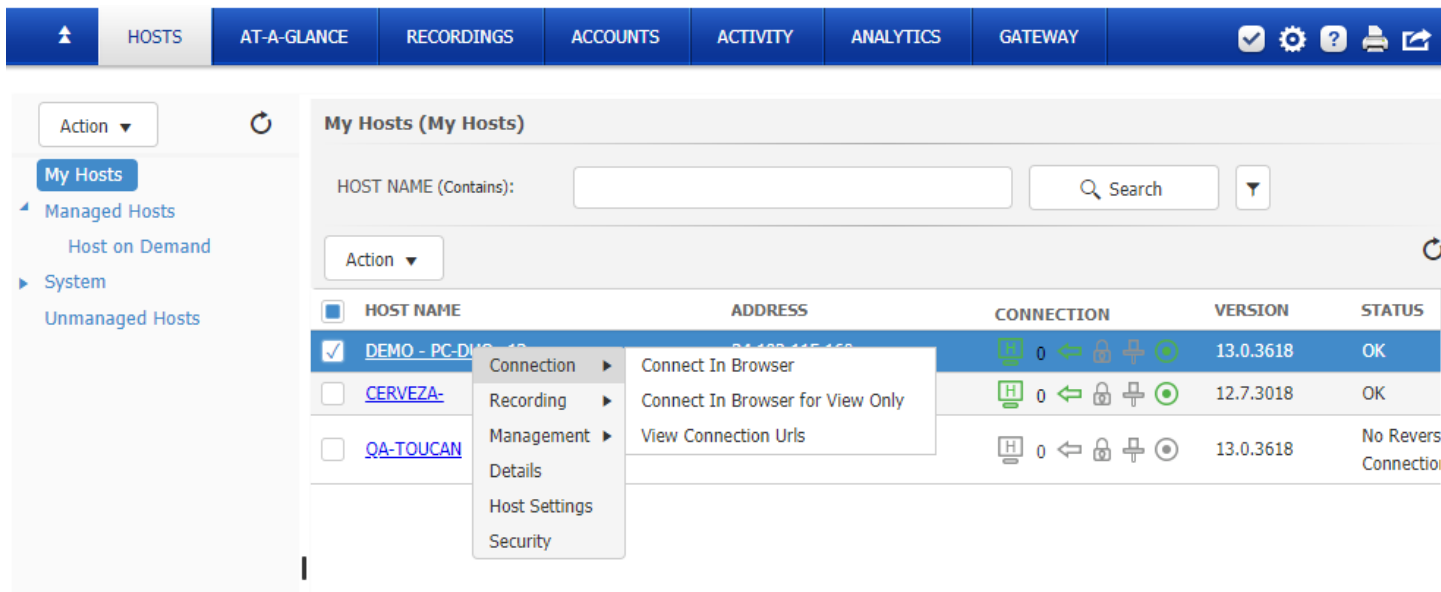


SHARING A DESKTOP & CONNECTING TO IT

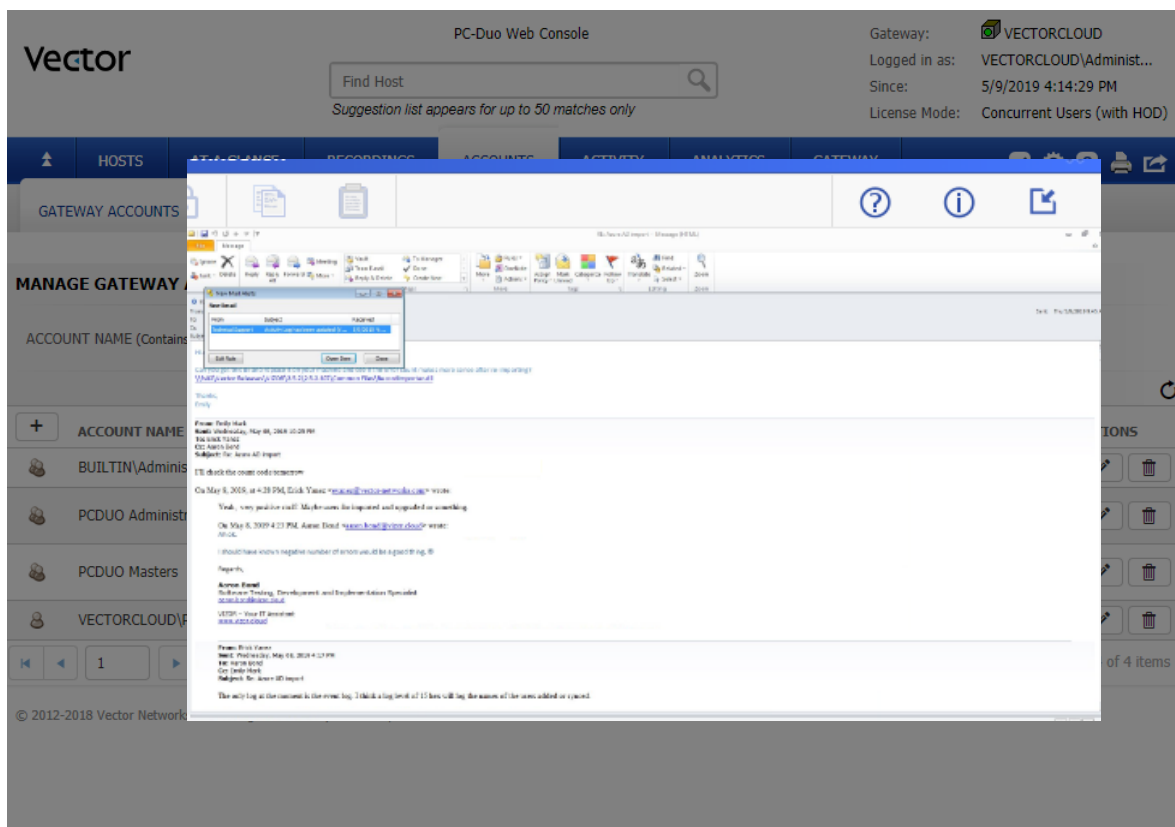
1. Launch the Host on Demand, click "Share my Desktop" on the PC-Duo Web Console landing page



2. All endpoints are in "My Hosts"; endpoints running the Host on Demand instances are in the Host on Demand group



3. Click to connect!



If you need help with your PC-Duo solution call 1-800-330-5035 or email support@vizor.cloud